

Control Monument Information Sheet

TC 61-514E
09/04

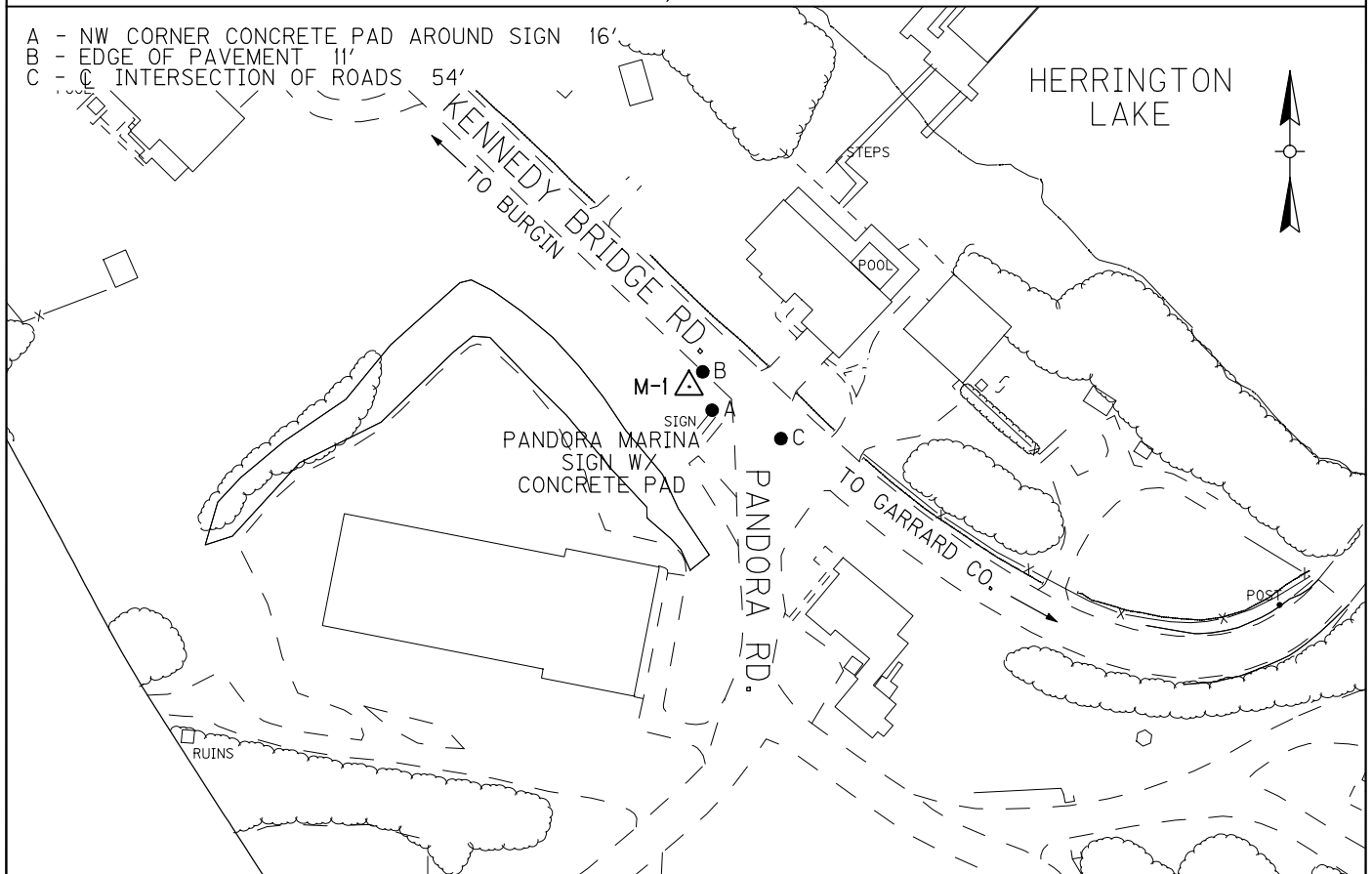
Kentucky Transportation Cabinet Department of Highways Division of Highway Design Survey Coordination

SITE/QUAD BRYANTSVILLE	STATION DESCRIPTION (COMPLETE DESCRIPTION REQUIRED) (TYPE, SIZE, DEPTH SET, etc.) M-1 is located from the intersection of Kennedy Bridge Rd, Ashley Camp Rd, Carmichael, and Chimney Rock, go southeast 0.5 miles along Kennedy Bridge Rd. to station on the right.			STATION DESIGNATION M-1	
LOCALITY/COUNTY MERCER/GARRARD	The station is a concrete monument with an aluminum disk and is set flush with ground.			STAMPING ON MARK AEI CONTROL M-1 2011	
DATE SET OR FOUND (DATE, with S or F) NOV 2011 S	LATITUDE N37° 44' 44.1566"	LONGITUDE W84° 42' 21.1004"	HORIZ. DATUM NAD83	ZONE KY SINGLE	VERT. DATUM NAVD88
	NORTHING (STATE PLANE) (US SURVEY FEET) 3796748.803	EASTING (STATE PLANE) (US SURVEY FEET) 5223135.079	ELEVATION 799.98	(UNDERLINE ONLY ONE) <u>GPS DERIVED</u> DIFF. LEVELS	ORDER ACCURACY HORZ-2nd VERT-3rd
PERSON FILLING OUT FORM S.COOTS	NORTHING (PROJECT DATUM) (US SURVEY FEET) NA	EASTING (PROJECT DATUM) (US SURVEY FEET) NA	GEOID MODEL GEOID 09	ELLIPSOID HEIGHT 692.252	OTHER INFO. ITEM NO. 7-1116.00
ESTAB. BY AGENCY AEI	PROJECT FACTOR 1.0002128743	BACK STATION I.D. NA	GRID AZIMUTH & DISTANCE TO BACK STATION NA		
SCALE FACTOR 0.9999075370	ELEVATION FACTOR 0.9998796229	AHEAD STATION I.D. M-3	GRID AZIMUTH & DISTANCE TO AHEAD STATION N 41° 00'17" W, 481.02'		

KENTUCKY REGISTERED LAND SURVEYOR
IN CHARGE OF MONUMENTATION

ROBERT NEUHAUS, PLS

KY. REGISTRATION NO.
3857



Control Monument Information Sheet

Kentucky Transportation Cabinet
Department of Highways
Division of Highway Design

DESIGNATION: **M-1**

SCALE: **1" = 100'**



AEI

AMERICAN ENGINEERS, INC.
PROFESSIONAL ENGINEERING

**65 ABERDEEN DRIVE
GLASGOW, KY 42141
(270) 651-7220**

Control Monument Information Sheet

TC 61-514E
09/04

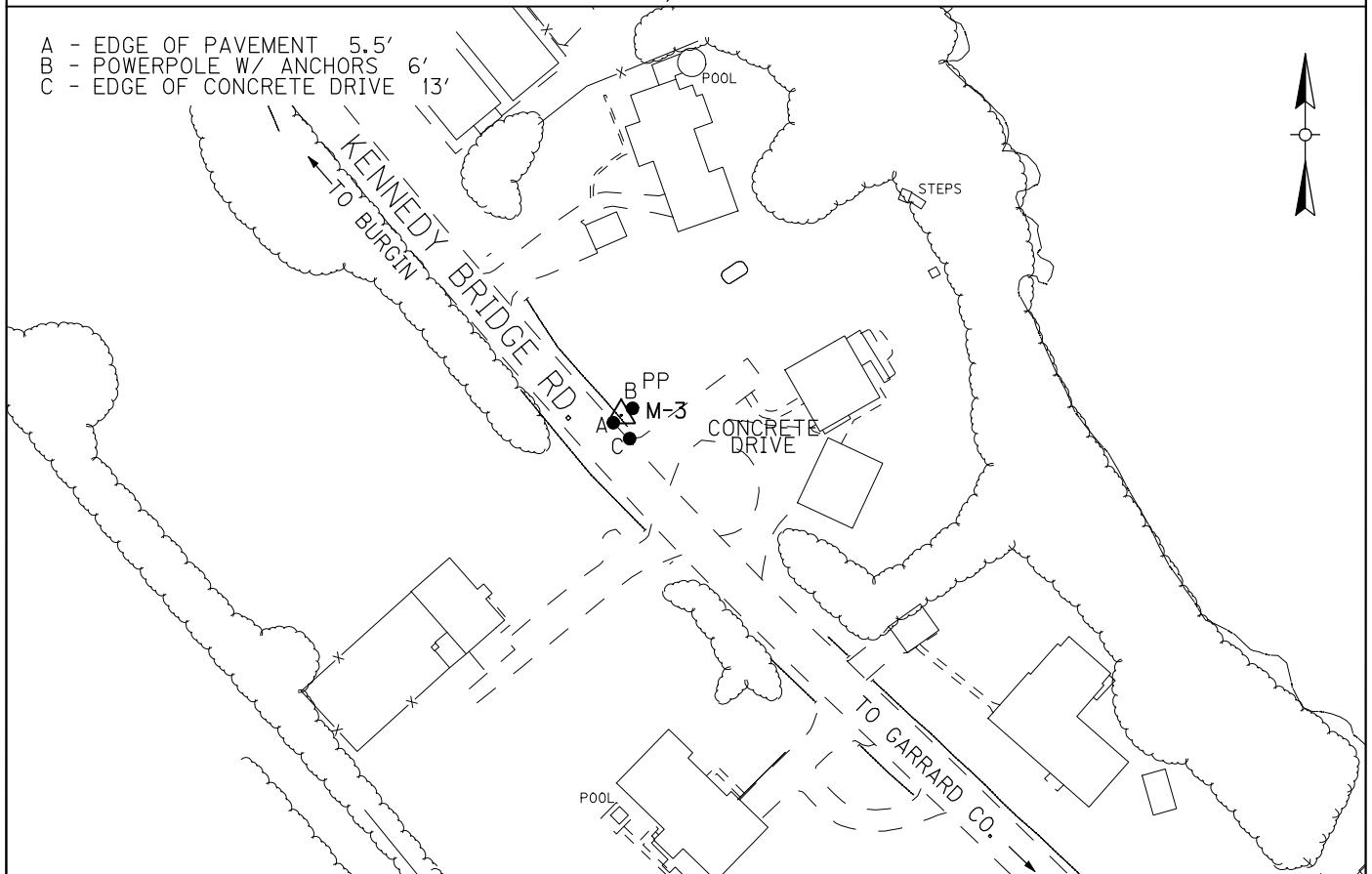
Kentucky Transportation Cabinet Department of Highways Division of Highway Design Survey Coordination

SITE/QUAD BRYANTSVILLE	STATION DESCRIPTION (COMPLETE DESCRIPTION REQUIRED) (TYPE, SIZE, DEPTH SET, etc.) M-3 is located from intersection of Kennedy Bridge Rd., Ashley Camp Rd., Carmichael, and Chimney Rock go southeast along Kennedy Bridge Rd. for 0.4 miles to station on the left.			STATION DESIGNATION M-3	
LOCALITY/COUNTY MERCER/GARRARD	The station is a concrete monument with an aluminum disk and is set flush with ground.			STAMPING ON MARK AEI CONTROL M-3 2011	
DATE SET OR FOUND (DATE, with S or F) NOV 2011 S	LATITUDE N37° 44' 47.7803"	LONGITUDE W84° 42' 24.9793"	HORIZ. DATUM NAD83	ZONE KY SINGLE	VERT. DATUM NAVD88
	NORTHING (STATE PLANE) (US SURVEY FEET) 3797111.806	EASTING (STATE PLANE) (US SURVEY FEET) 5222819.474	ELEVATION 829.32	(UNDERLINE ONLY ONE) <u>GPS DERIVED</u> DIFF. LEVELS	ORDER ACCURACY HORZ-2nd VERT-3rd
PERSON FILLING OUT FORM S.COOTS	NORTHING (PROJECT DATUM) (US SURVEY FEET) NA	EASTING (PROJECT DATUM) (US SURVEY FEET) NA	GEOID MODEL GEOID 09	ELLIPSOID HEIGHT 721.578	OTHER INFO. ITEM NO. 7-1116.00
ESTAB. BY AGENCY AEI	PROJECT FACTOR 1.0002175183	BACK STATION I.D. M-1	GRID AZIMUTH & DISTANCE TO BACK STATION S 41° 00'17" E, 481.02'		
SCALE FACTOR 0.9999074970	ELEVATION FACTOR 0.9998750204	AHEAD STATION I.D. M-2	GRID AZIMUTH & DISTANCE TO AHEAD STATION N 39° 55'20" W, 640.52'		

KENTUCKY REGISTERED LAND SURVEYOR
IN CHARGE OF MONUMENTATION

ROBERT NEUHAUS, PLS

KY. REGISTRATION NO.
3857



Control Monument Information Sheet

Kentucky Transportation Cabinet
Department of Highways
Division of Highway Design

DESIGNATION: **M-3**

SCALE: **1" = 100'**



AEI

AMERICAN ENGINEERS, INC.
PROFESSIONAL ENGINEERING

**65 ABERDEEN DRIVE
GLASGOW, KY 42141
(270) 651-7220**

Control Monument Information Sheet

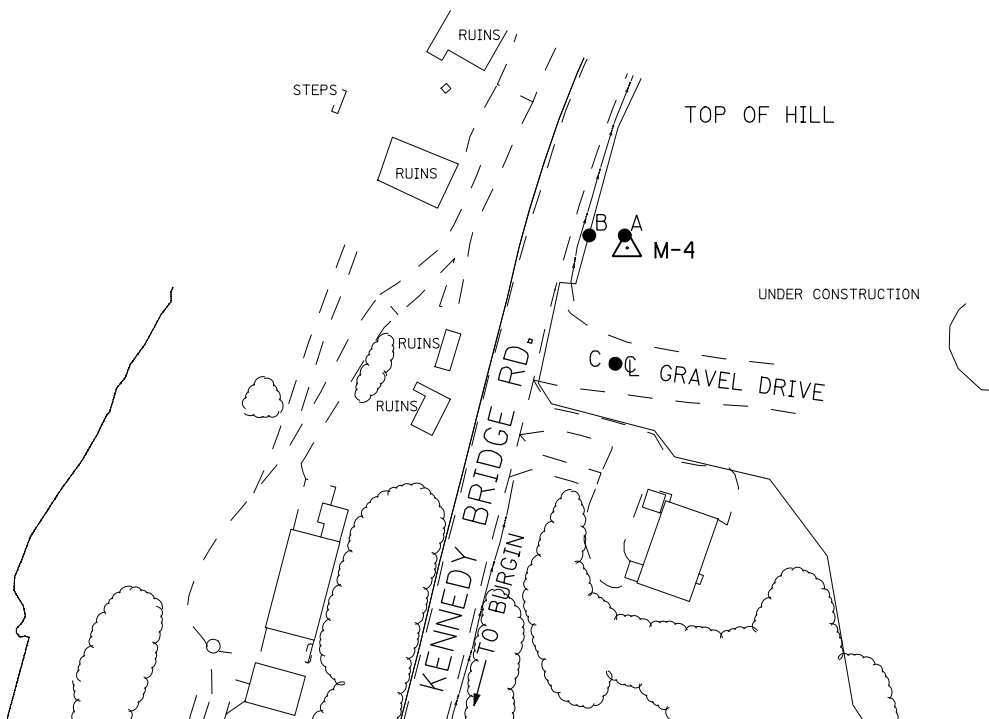
TC 61-514E
09/04

Kentucky Transportation Cabinet Department of Highways Division of Highway Design Survey Coordination

SITE/QUAD BRYANTSVILLE	STATION DESCRIPTION (COMPLETE DESCRIPTION REQUIRED) (TYPE, SIZE, DEPTH SET, etc.) M-4 is located from the intersection of Kennedy Bridge Rd., Ashley Camp Rd., Carmichael, and Chimney Rock go southeast 0.8 miles along Kennedy Bridge Rd. to station on the right at top of hill. The station is a concrete monument with an aluminum disk and is set flush with ground.			STATION DESIGNATION M-4	
LOCALITY/COUNTY MERCER/GARRARD				STAMPING ON MARK AEI CONTROL M-4 2011	
DATE SET OR FOUND (DATE, with S or F) NOV 2011 S	LATITUDE N37° 44' 57.2964"	LONGITUDE W84° 42' 09.0260"	HORIZ. DATUM NAD83	ZONE KY SINGLE	VERT. DATUM NAVD88
	NORTHING (STATE PLANE) (US SURVEY FEET) 3798088.568	EASTING (STATE PLANE) (US SURVEY FEET) 5224089.844	ELEVATION 793.58	(UNDERLINE ONLY ONE) <u>GPS DERIVED</u> DIFF. LEVELS	ORDER ACCURACY HORZ-2nd VERT-3rd
PERSON FILLING OUT FORM S.COOTS	NORTHING (PROJECT DATUM) (US SURVEY FEET) NA	EASTING (PROJECT DATUM) (US SURVEY FEET) NA	GEOID MODEL GEOID 09	ELLIPSOID HEIGHT 685.843	OTHER INFO. ITEM NO. 7-1116.00
ESTAB. BY AGENCY AEI	PROJECT FACTOR 1.0002120119	BACK STATION I.D. M-5	GRID AZIMUTH & DISTANCE TO BACK STATION S 13° 52'25" W, 525.76'		
SCALE FACTOR 0.9999073940	ELEVATION FACTOR 0.9998806279	AHEAD STATION I.D. NA	GRID AZIMUTH & DISTANCE TO AHEAD STATION NA		

KENTUCKY REGISTERED LAND SURVEYOR
IN CHARGE OF MONUMENTATION **ROBERT NEUHAUS, PLS** KY. REGISTRATION NO.
3857

A - POWERPOLE 6'
B - EDGE OF PAVEMENT 20'
C - C OF GRAVEL DRIVE 61'



Control Monument Information Sheet

Kentucky Transportation Cabinet
Department of Highways
Division of Highway Design

DESIGNATION: **M-4**

SCALE: **1" = 100'**



AEI

AMERICAN ENGINEERS, INC.
PROFESSIONAL ENGINEERING

**65 ABERDEEN DRIVE
GLASGOW, KY 42141
(270) 651-7220**

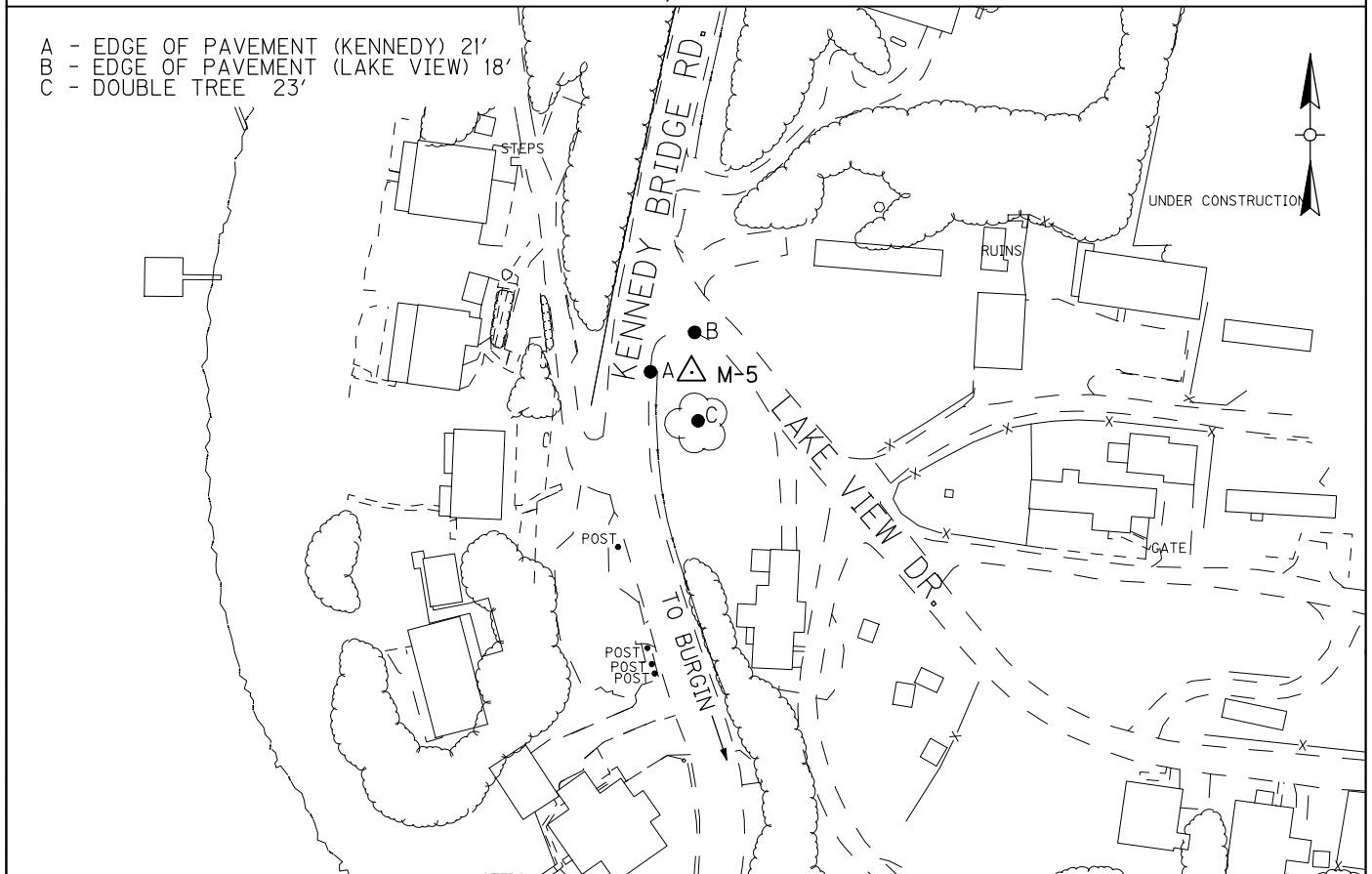
Control Monument Information Sheet

TC 61-514E
09/04

Kentucky Transportation Cabinet Department of Highways Division of Highway Design Survey Coordination

SITE/QUAD BRYANTSVILLE	STATION DESCRIPTION (COMPLETE DESCRIPTION REQUIRED) (TYPE, SIZE, DEPTH SET, etc.) M-5 is located from intersection of Kennedy Bridge Rd., Ashley Camp Rd., Carmichael, and Chimney Rock go southeast 0.7 miles along Kennedy Bridge Rd. to station on the right. Station is 27' from int. of Kennedy Bridge Rd., and Lake View Dr. The station is a concrete monument with an aluminum disk and is set flush with ground.			STATION DESIGNATION M-5	
LOCALITY/COUNTY MERCER/GARRARD				STAMPING ON MARK AEI CONTROL M-5 2011	
DATE SET OR FOUND (DATE, with S or F) NOV 2011 S	LATITUDE N37° 44' 52.2641"	LONGITUDE W84° 42' 10.6669"	HORIZ. DATUM NAD83	ZONE KY SINGLE	VERT. DATUM NAVD88
	NORTHING (STATE PLANE) (US SURVEY FEET) 3797578.148	EASTING (STATE PLANE) (US SURVEY FEET) 5223963.778	ELEVATION 797.76	(UNDERLINE ONLY ONE) <u>GPS DERIVED</u> DIFF. LEVELS	ORDER ACCURACY HORZ-2nd VERT-3rd
PERSON FILLING OUT FORM S.COOTS	NORTHING (PROJECT DATUM) (US SURVEY FEET) NA	EASTING (PROJECT DATUM) (US SURVEY FEET) NA	GEOID MODEL GEOID 09	ELLIPSOID HEIGHT 690.028	OTHER INFO. ITEM NO. 7-1116.00
ESTAB. BY AGENCY AEI	PROJECT FACTOR 1.0002126142	BACK STATION I.D. NA	GRID AZIMUTH & DISTANCE TO BACK STATION NA		
SCALE FACTOR 0.9999074480	ELEVATION FACTOR 0.9998799719	AHEAD STATION I.D. M-4	GRID AZIMUTH & DISTANCE TO AHEAD STATION N 13° 52'25" E, 525.76'		

KENTUCKY REGISTERED LAND SURVEYOR
IN CHARGE OF MONUMENTATION **ROBERT NEUHAUS, PLS** KY. REGISTRATION NO. **3857**



Control Monument Information Sheet

Kentucky Transportation Cabinet
Department of Highways
Division of Highway Design

DESIGNATION: M-5

SCALE: 1" = 100'



AEI

AMERICAN ENGINEERS, INC.
PROFESSIONAL ENGINEERING

65 ABERDEEN DRIVE
GLASGOW, KY 42141
(270) 651-7220